

ISOMETRIC VIEW

A-1496 CITY OF LA "S"

RING AND COVER TO BE SET WITH CLASS "C" MORTAR

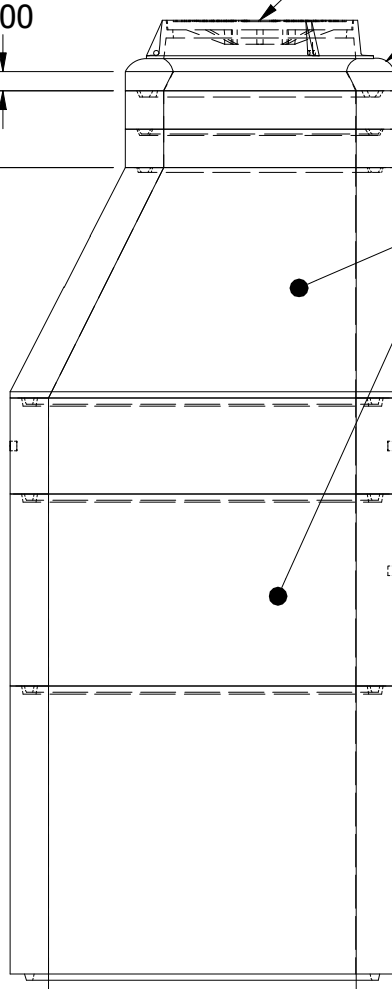
PVC LINED INTERIOR SURFACE OF SHAFT, CONE AND GRADE RINGS

12" MIN.,
24" MAX.

3.00

24"
OR
36"

SHAFT
HEIGHTS VARY
12" TO 60"



REGON PRODUCTS

Phone (805) 527-0841 Fax (805) 584-0769

TITLE

48 LA City TYPE 1 LINING

APPROVED BY

DATE

APPROVED BY

DATE

DRAWN BY

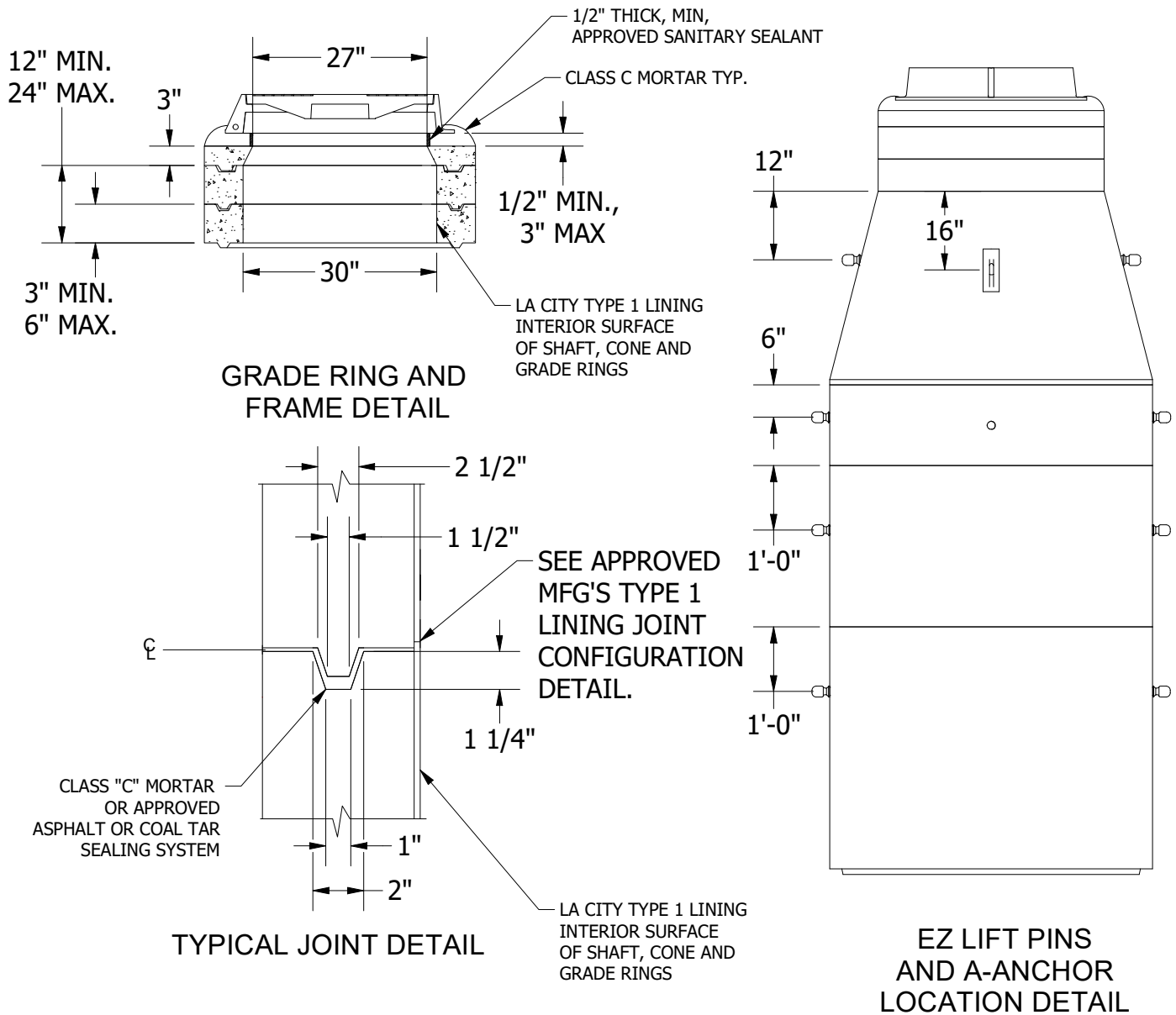
DATE

MODEL NO.

SH 1 OF 2

KSTRADER

6/2/2021



NOTES: UNLESS OTHERWISE SPECIFIED.

1. MANUFACTURING METHODS AND MATERIALS FOR PRECAST UNITS SHALL CONFIRM WITH ASTM C-478 AND LA CITY STANDARD S-140-AND S-142.
2. PRECAST MATERIALS AND MANUFACTURING METHODS SHALL CONFORM TO ASTM C-478.
3. CONCRETE SHALL HAVE A MINIMUM COMPRESSIVE STRENGTH F C= 4000 PSI AT 28 DAYS. MIX DESIGN # 1419017, MIX DESCRIPTION 660-CW-4000P PRE-CON MIX.
4. THE PORTLAND CEMENT USED IN THE PRECAST SECTIONS SHALL MEET THE REQUIREMENTS OF TYPE II/V HIGH SULFATE RESISTANT CEMENT IN ACCORDANCE WITH ASTM C-150.
5. TYPE 1 LINING SHALL BE INSTALLED BY CERTIFIED INSTALLERS.
6. LANE EZ LIFT PINS AND CONAC A-ANCHORS ARE USED FOR LIFTING. GROUT OVER HOLES AFTER INSTALLATION OF MAINTENANCE HOLES.
7. REINFORCING HOOPS AREA .25 GRADE 60 INSTALLED EVERY 12" PER ASTM C 478 AND ASTM A 615.
8. MAXIMUM HEIGHT 35 FEET, SEE PROJECT PLANS IF THE HEIGHT EXCEEDS 35 FEET.
9. ALL JOINTS TO BE SEALED USING CLASS "C" MORTAR OR APPROVED PREFORMED FLEXIBLE JOINT SEALANT. SEALANT SHALL MEET OR EXCEED ASTM C 990.
10. RING AND COVER SHALL BE GREY CAST IRON A-1496 MARKED "S".
11. MANHOLE COMPLIES WITH HS20 TRAFFIC LOADING.
12. THE STRUCTURE WAS NOT DESIGNED TO RECEIVE SURCHARGE LOADS FROM ADJACENT STRUCTURES OR RAILROAD LOADS.
13. CONTACT BUREAU OF CONTRACT ADMINISTRATION MATERIAL CONTROL SECTION AT (213) 847-2442 FOR FABRICATION INSPECTION.
14. A COPY OF PRODUCTION APPROVAL TO BE AVAILABLE AT PRECON PRODUCTS MANUFACTURING PLANT AND JOB SITE AT ALL TIMES.
15. SEE CITY OF LOS ANGELES APPROVED PRODUCTS LIS FOR APPROVED TYPE 1 LINING AND APPROVED PREFORMED FLEXIBLE JOINT SEALANT.

PRECON PRODUCTS
 Phone (805) 527-0841 Fax (805) 584-0769

TITLE			
48 LA City TYPE 1 LINING			
DRAWN BY	DATE	MODEL NO.	
KSTRADER	6/2/2021		SH 2 OF 2

APPROVED BY	DATE	APPROVED BY	DATE