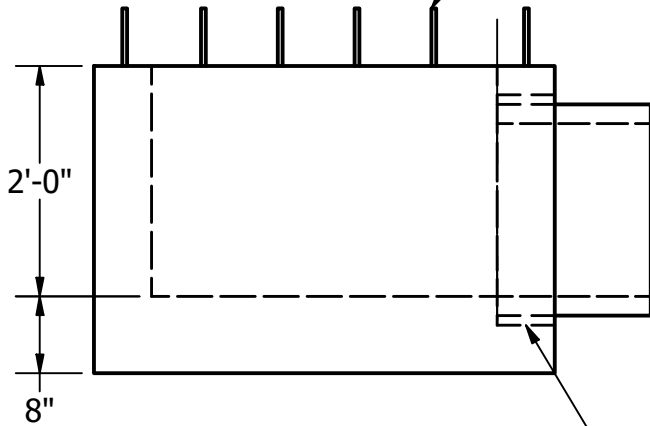
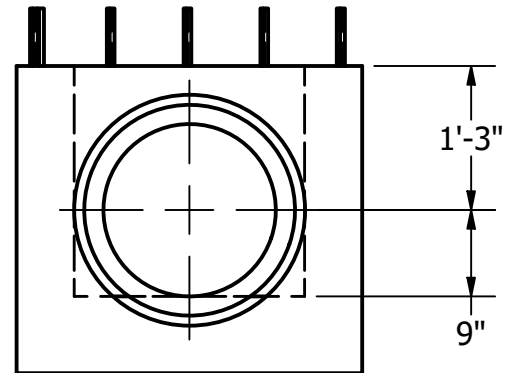


MIN. 6" STEEL EXPOSED TO POUR TOP IN THE FIELD #4 @ 8" E.W.



24" HOLE FOR A 18" PIPE



**NOTES: UNLESS OTHERWISE SPECIFIED.**

1. CONCRETE SHALL HAVE A MINIMUM COMPRESSIVE STRENGTH  $f'c = 5000$  PSI AT 28 DAYS.
2. THE PORTLAND CEMENT USED IN THE PRECAST SECTIONS SHALL MEET THE REQUIREMENTS OF TYPE II/V HIGH SULFATE RESISTANT CEMENT IN ACCORDANCE WITH ASTM C-150.
3. ALL REINFORCING A706 REBAR. NO PLASTIC SUPPORTS. WALL THICKNESS AND REINFORCING PER TABLE C



240 W. LOS ANGELES AVE. SIMI VALLEY, CA 93065  
 P: (805) 527-0841 F: (805) 584-0769,  
 WWW.PRE-CONPRODUCTS.COM

THE CONTENTS OF THESE DRAWINGS ARE THE PROPERTY OF PRECON PRODUCTS AND ARE PROPRIETARY AND CONFIDENTIAL. THESE DOCUMENTS SHALL NOT BE DISSEMINATED FOR ANY OTHER USE, WITHOUT THE WRITTEN CONSENT OF PRECON PRODUCTS. IF YOU RECEIVE THESE DRAWINGS IN ERROR, RETURN TO SENDER WITHOUT READING, COPYING OR DISCLOSING THE CONTENTS.

DRAWN BY:  
**K.STRADER**  
 DATE:  
**5/12/2020**

TITLE:  
**G1 Sample Vault**  
 SHEETS:  
**1 OF 1**  
**DO NOT SCALE**

LOCATION:T:\Drawings\Vault\DESIGN5\Boxes\Website\G1\_Vault\1Ba.dwg