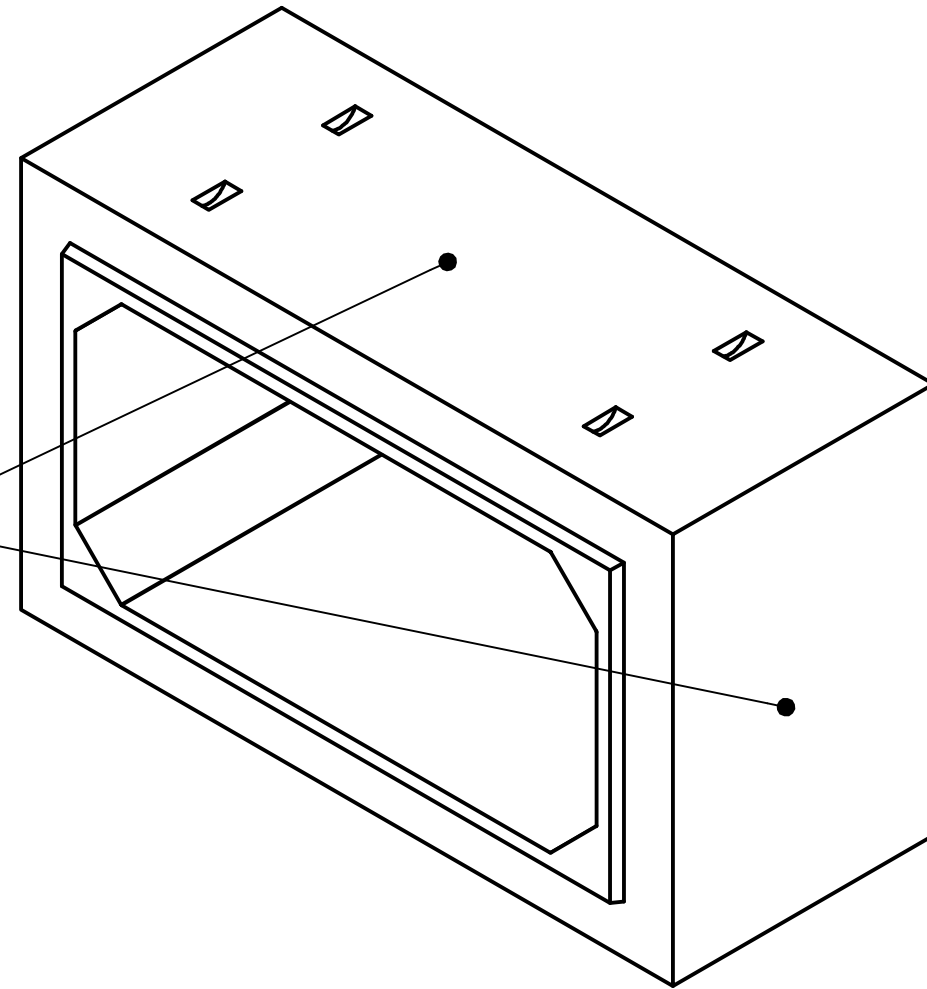
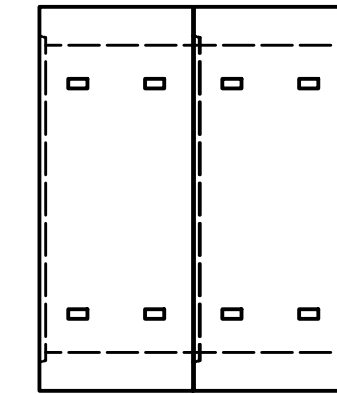


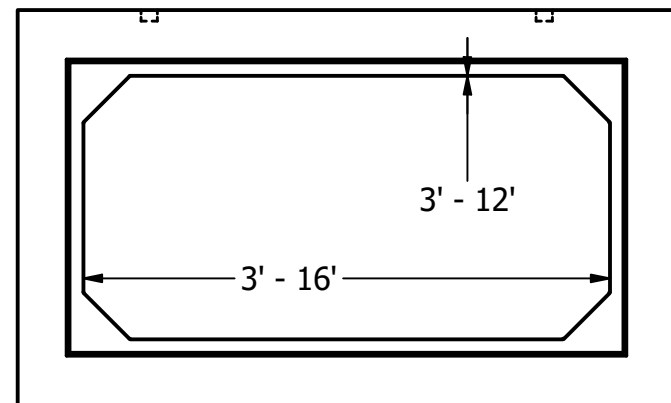
OPTIONAL ACCESS
AND PIPE OPENINGS
UPON REQUEST



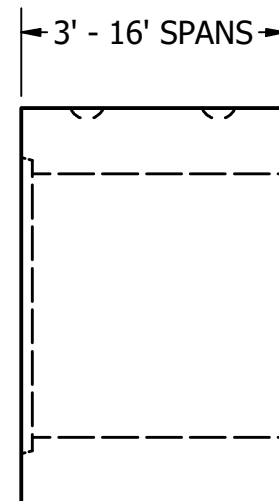
ISOMETRIC VIEW



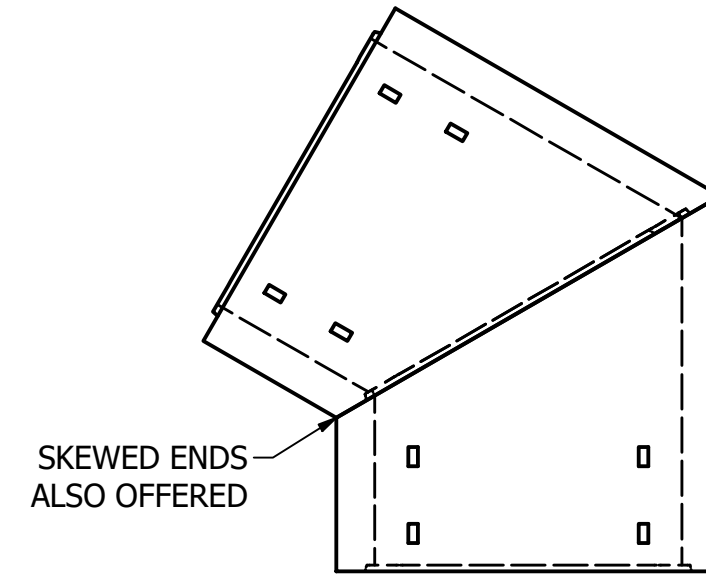
ASSEMBLED MODEL



END VIEW



PROFILE VIEW



SKEWED ENDS
ALSO OFFERED

ASSEMBLED MODEL

NOTE: UNLESS OTHERWISE SPECIFIED.
1. PRECAST CONCRETE MATERIALS AND MANUFACTURING METHODS SHALL CONFORM TO CATLRANS STD SPEC 2018.
2. CONCRETE SHALL HAVE A MINIMUM COMPRESSIVE STRENGTH FC=5000 PSI AT 28 DAYS.
3. THE PORTLAND CEMENT USED IN THE PRECAST SECTIONS SHALL MEET THE REQUIREMENTS OF TYPE II/IV HIGH SULFATE RESISTANT CEMENT IN ACCORDANCE WITH ASTM C-150.

REVISIONS:

No.	DATE	SHEET	DESCRIPTION

THE CONTENTS OF THESE DRAWINGS ARE THE PROPERTY OF PRECON PRODUCTS AND ARE PROPRIETARY AND CONFIDENTIAL. THESE DOCUMENTS SHALL NOT BE DISSEMINATED FOR ANY OTHER USE, WITHOUT THE WRITTEN CONSENT OF PRECON PRODUCTS. IF YOU RECEIVE THESE DRAWINGS IN ERROR, RETURN TO SENDER WITHOUT READING, COPYING, OR DISCLOSURING THE CONTENTS.



TITLE: BOX CULVERT SAMPLE SHEET

DRAWN BY: W. Tack

DATE: 7/12/2021

SHEET: 1 OF 1

LOCATION: T:\Drawings\Vault\DESIGNS\Box Culvert\Website\