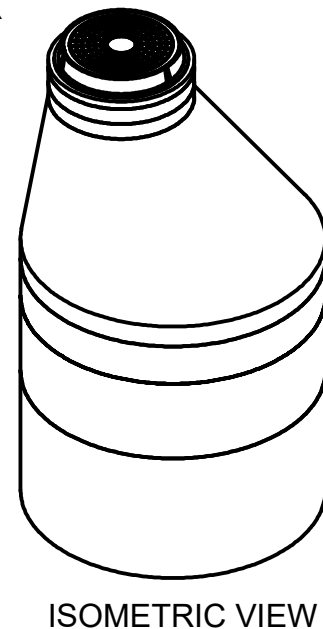
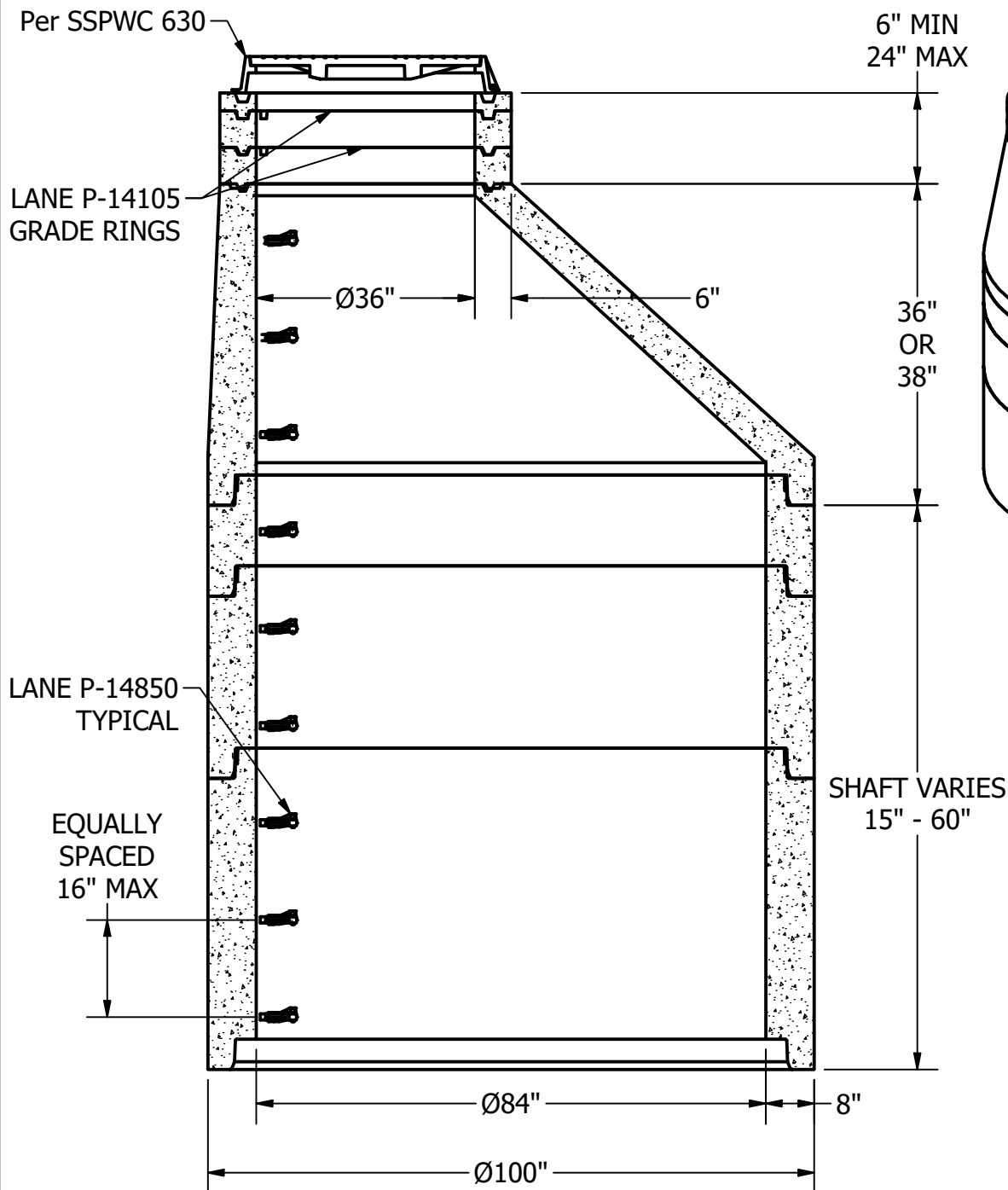


LOCATION: T:\Drawings\Vault\DESIGNS\MANHOLES\MH CUT SHEETS\Standard\MH84_SHAFT-STDw36x48-Step.dwg



NOTES: UNLESS OTHERWISE SPECIFIED.

1. ALL DIMENSIONS ARE IN DECIMAL INCHES.
2. PRECAST MATERIALS AND MANUFACTURING METHODS SHALL CONFORM TO ASTM C-478.
3. CONCRETE SHALL HAVE A MINIMUM COMPRESSIVE STRENGTH F C= 4000 PSI AT 28 DAYS.
4. THE PORTLAND CEMENT USED IN THE PRECAST SECTIONS SHALL MEET THE REQUIREMENTS OF TYPE II/V HIGH SULFATE RESISTANT CEMENT IN ACCORDANCE WITH ASTM C-150.
5. RING AND COVER SHALL BE GREY CAST IRON CONFORMING TO ASTM A-48 CLASS 35B.
6. RING AND COVER STYLE AND MARKINGS VARY BY SPECIFYING AGENCY.
7. PRE-CAST JOINTS SHALL BE SEALED USING MASTIC.
8. STEEL REINFORCED POLYETHYLENE STEPS SHALL CONFORM TO SPPWC AND APWA 636-1.



240 W. LOS ANGELES AVE. SIMI VALLEY, CA 93065
P: (805) 527-0841 F: (805) 584-0769,
WWW.PRE-CONPRODUCTS.COM

THE CONTENTS OF THESE DRAWINGS
ARE THE PROPERTY OF PRECON PRODUCTS
AND ARE PROPRIETARY AND CONFIDENTIAL.
THESE DOCUMENTS SHALL NOT BE
DISSEMINATED FOR ANY OTHER USE,
WITHOUT THE WRITTEN CONSENT OF
PRECON PRODUCTS. IF YOU RECEIVE
THESE DRAWINGS IN ERROR, RETURN
TO SENDER WITHOUT READING, COPYING
OR DISCLOSING THE CONTENTS.

DRAWN BY:

W. TACK

DATE:

7/7/2021

TITLE:

MANHOLE, 84" DIA, 36" RING AND
COVER, WITH STEPS

SHEETS:

1 OF 1

DO NOT SCALE