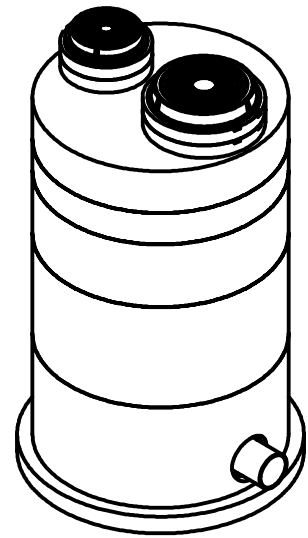
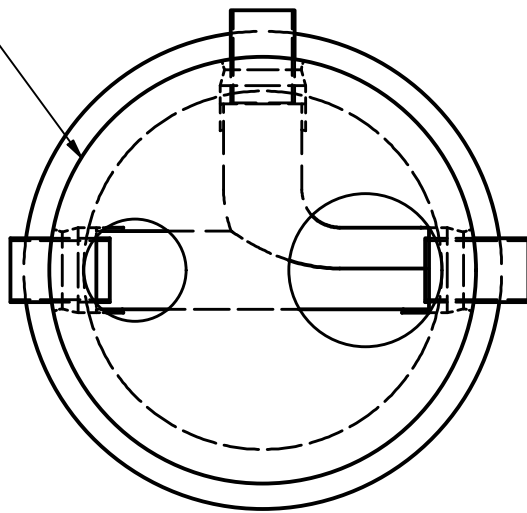
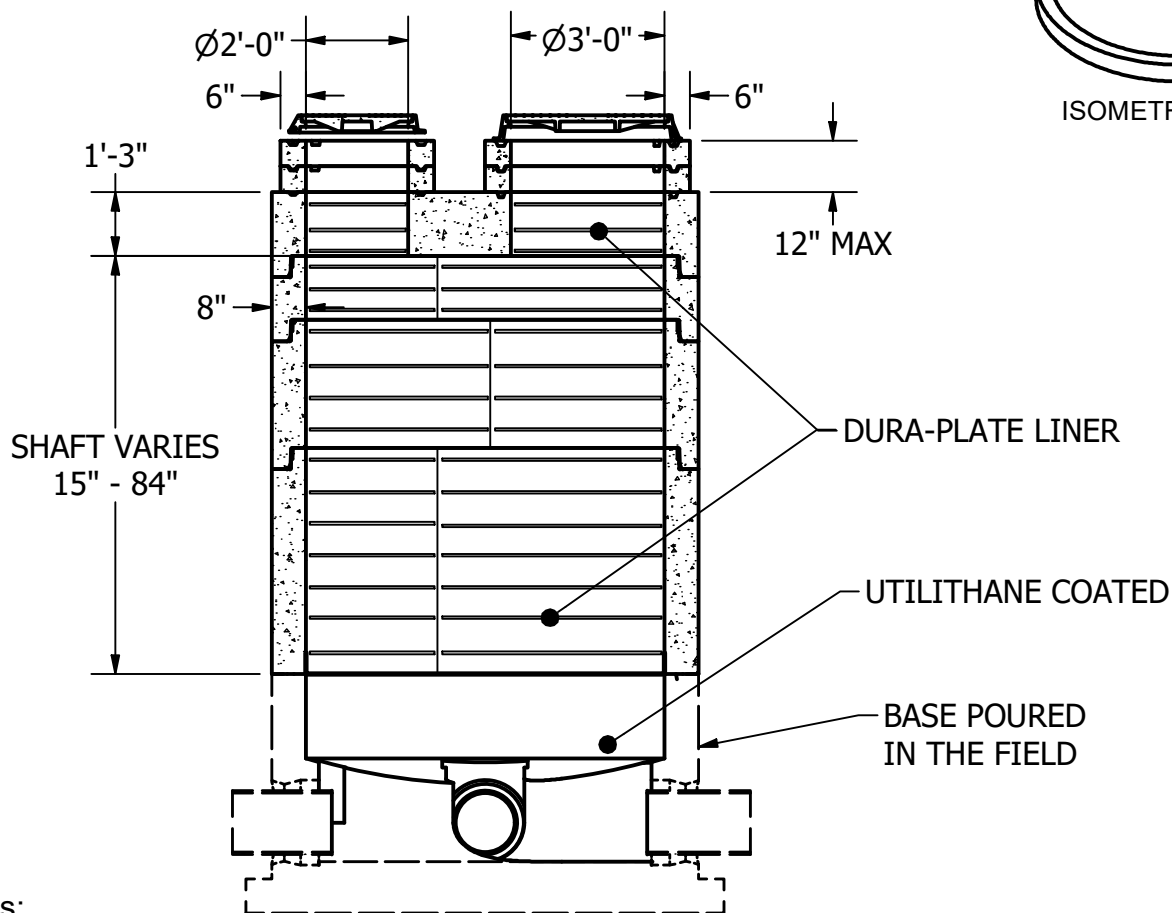


Ø102" OUTSIDE

Ø84" INSIDE



ISOMETRIC VIEW



Notes:

1. Precast materials and manufacturing methods shall conform to ASTM C-478.
2. Concrete shall have a minimum compressive strength $f_c = 4000$ psi at 28 days.
3. The Portland cement used in the precast sections shall meet the requirements of Type II/V high sulfate resistant cement in accordance with ASTM C-150.
4. Ring and cover shall be gray cast iron conforming to ASTM-A-48 Class 35B.
5. Ring and cover style and markings vary by specifying agency.
6. Pre-cast joints shall be sealed using a double layer of mastic.
7. Pipe to manhole connections shall be made using X-Cel, A-Lok or Z-Lok flexible connectors by A-Lok Products. Connectors shall meet the requirements of ASTM C-923 and SSPWC 208-6.1.1.
8. Interior of pre-cast shafts and flat top shall be lined with A-Lok Dura-Plate. All materials and installation shall be in accordance with manufacturer's recommendations.



240 W. LOS ANGELES AVE. SIMI VALLEY, CA 93065
P: (805) 527-0841 F: (805) 584-0769,
WWW.PRE-CONPRODUCTS.COM

THE CONTENTS OF THESE DRAWINGS
ARE THE PROPERTY OF PRECON PRODUCTS
AND ARE PROPRIETARY AND CONFIDENTIAL.
THESE DOCUMENTS SHALL NOT BE
DISSEMINATED FOR ANY OTHER USE,
WITHOUT THE WRITTEN CONSENT OF
PRECON PRODUCTS. IF YOU RECEIVE
THESE DRAWINGS IN ERROR, RETURN
TO SENDER WITHOUT READING, COPYING
OR DISCLOSING THE CONTENTS.

DRAWN BY:
K.STRADER
DATE:
1/27/2021

TITLE:

84 DIA, 24 & 36 RING AND COVER,
FLAT TOP, DURA-PLATE

SHEETS:

1 OF 1

DO NOT SCALE