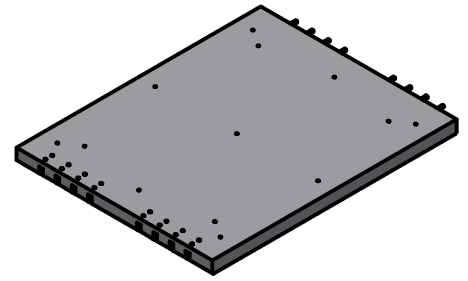
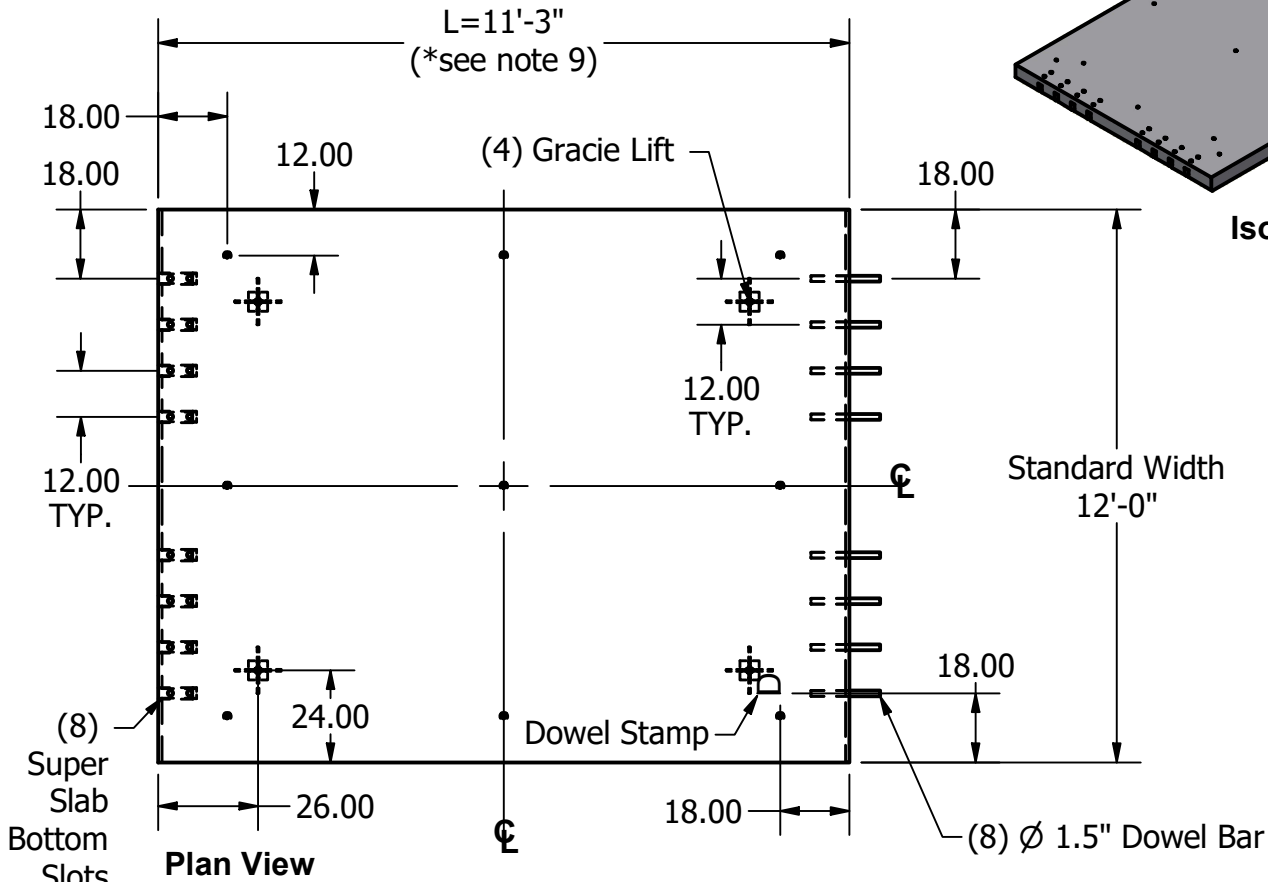


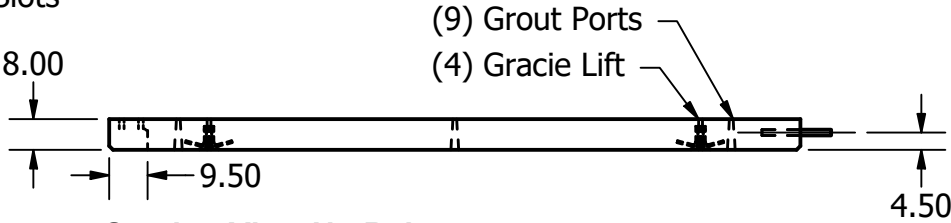
# 8" B Panel



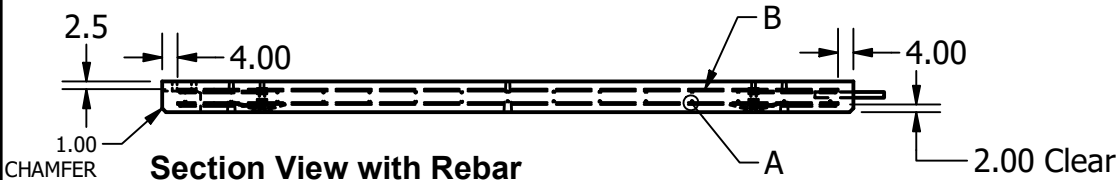
Isometric View



Plan View



Section View No Rebar



Section View with Rebar

NOTES: UNLESS OTHERWISE SPECIFIED.

1. ALL DIMENSIONS ARE IN DECIMAL INCHES.
2. PRECAST MATERIALS AND MANUFACTURING METHODS SHALL CONFORM TO PROJECT 07-306204. MINIMUM 6000 PSI AND MINIMUM 14 DAY CURE PRIOR TO SHIPPING.
3. CONCRETE SHALL HAVE A MINIMUM COMPRESSIVE STRENGTH  $F_c = 6000$  PSI AT 28 DAYS. MIX DESIGN # 1508576
4. GALVANIZED GRACIE LIFTS SHALL BE CAST INTO PANEL AND USED FOR LIFTING AND LEVELING.
5. FORT MILLER GROUT SUPPORTED BOTTOM-SLOT LOAD TRANSFER SYSTEM TO BE USED.
6. DOWELS SHALL BE EPOXY COATED AND COVERED AFTER POUR TO PROTECT FROM SUNLIGHT.
7. PANEL SHALL HAVE A 2.5" COVER ON TOP MAT AND 2" COVER BOTTOM MAT WITH A 4" COVER ON ALL FOUR SIDES.
8. TYPE "B" PANELS ARE TO BE USED AT THE BEGINNING AND MIDDLE OF AN INSTALLATION.
9. ADJUST L FROM 8' TO 15' TO CONFORM TO FIELD REQUIREMENTS



TITLE		8" B Panel	
APPROVED BY	DATE	APPROVED BY	DATE
DRAWN BY	DATE	MODEL NO.	
K.Strader	7/26/2016		
			SH 1 OF 1