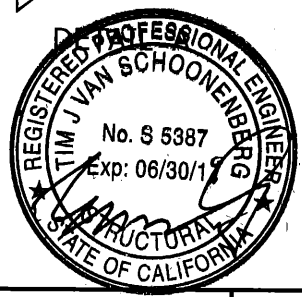
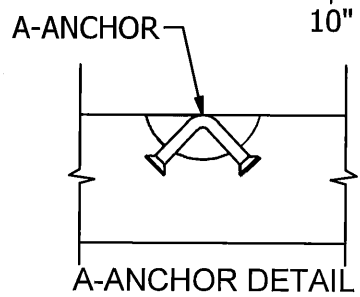
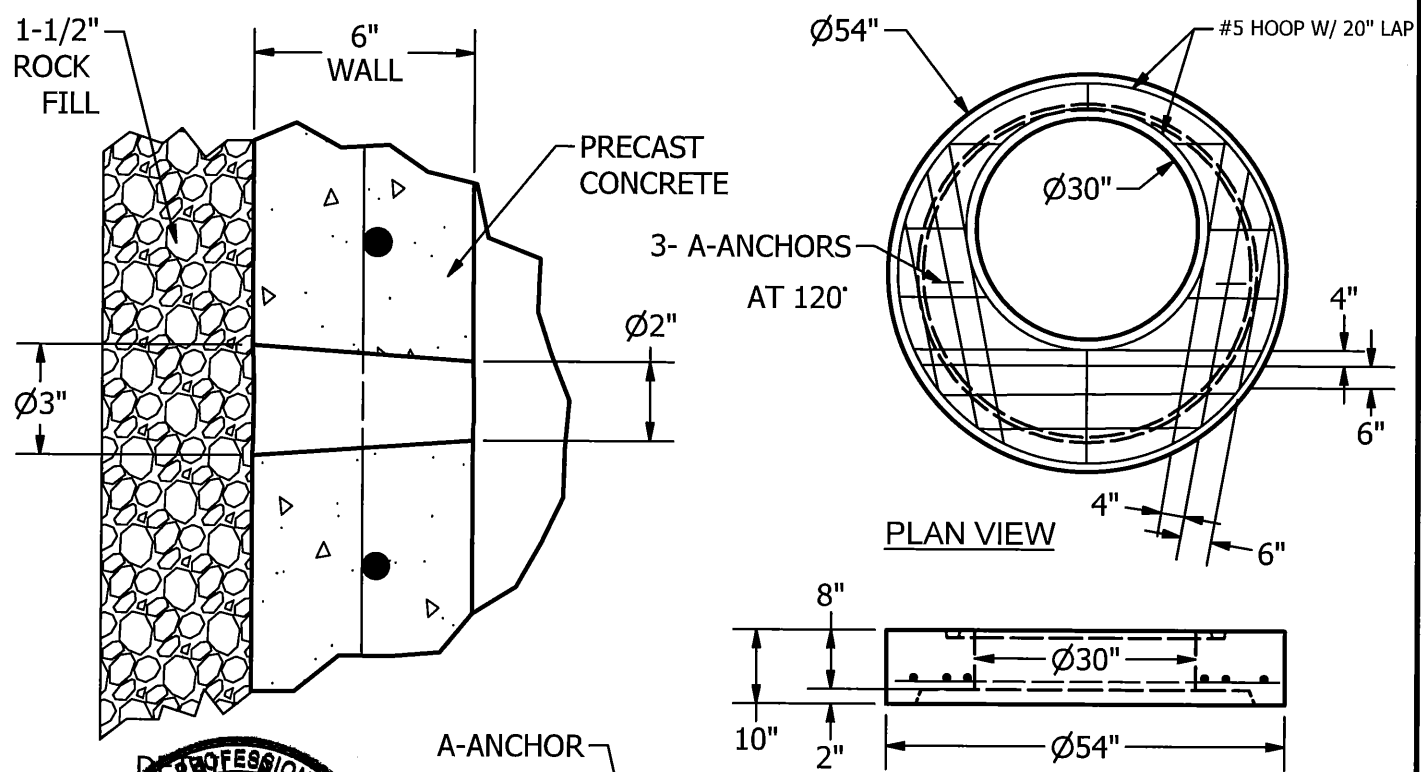


OPTIONAL SHAFTS WITH AND WITHOUT DRAIN HOLES



LOCATION: T:\Drawings\Vault\DESIGNS\MANHOLES\LA City\LA City Drywell\LA City DryWell.dwg



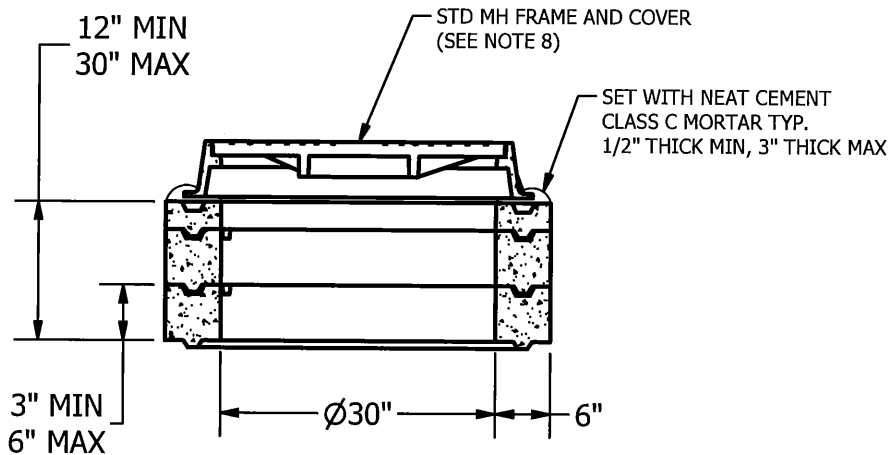
240 W. LOS ANGELESE AVE. SIMI VALLEY, CA 93065
P: (805) 527-0841 F: (805) 584-0769
WWW.PRE-CONPRODUCTS.COM

THE CONTENTS OF THESE DRAWINGS ARE THE PROPERTY OF PRECON PRODUCTS AND ARE PROPRIETARY AND CONFIDENTIAL. THESE DOCUMENTS SHALL NOT BE DISSEMINATED FOR ANY OTHER USE, WITHOUT THE WRITTEN CONSENT OF PRECON PRODUCTS. IF YOU RECEIVE THESE DRAWINGS IN ERROR, RETURN TO SENDER WITHOUT READING, COPYING OR DISCLOSING THE CONTENTS.

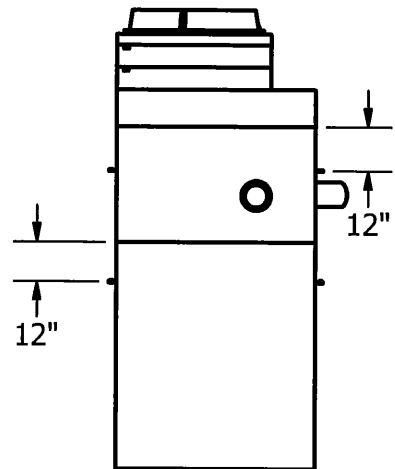
DRAWN BY:
K.STRADER
DATE:
1/2/2019

TITLE:
42" INFILTRATION DRYWELL
LA CITY DRAINAGE SYSTEM

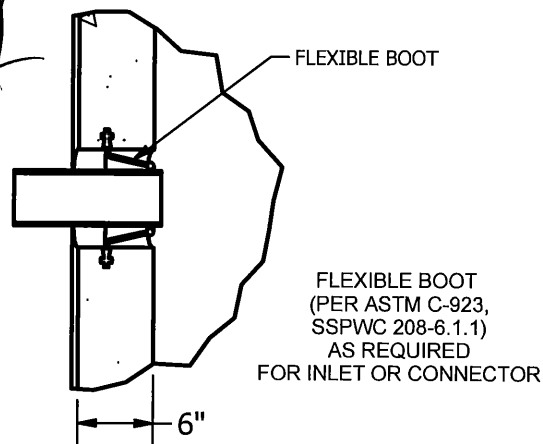
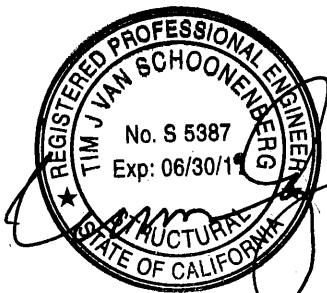
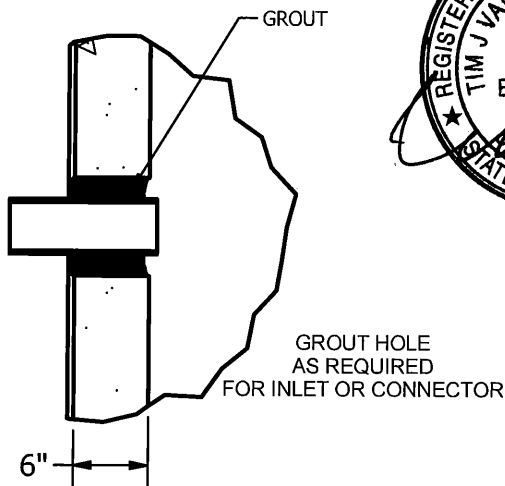
SHEETS:
2 OF 3
DO NOT SCALE



GRADE RING AND FRAME DETAIL



EZ LIFT PIN LOCATION DETAIL



TYPICAL PIPE PENETRATION DETAIL

NOTES: UNLESS OTHERWISE SPECIFIED.

1. PRECAST MATERIALS AND MANUFACTURING METHODS SHALL CONFORM TO ASTM C-478.
2. CONCRETE SHALL HAVE A MINIMUM COMPRESSIVE STRENGTH F C= 4000 PSI AT 28 DAYS. MIX DESIGN # 1419017, MIX DESCRIPTION 660-CW-4000P PRE-CON MIX.
3. THE PORTLAND CEMENT USED IN THE PRECAST SECTIONS SHALL MEET THE REQUIREMENTS OF TYPE II/V HIGH SULFATE RESISTANT CEMENT IN ACCORDANCE WITH ASTM C-150.
4. LANE EZ LIFT PINS, A-ANCHOR AND CONAC A-ANCHORS ARE USED FOR LIFTING. GROUT OVER HOLES AFTER INSTALLATION OF MAINTENANCE HOLES.
5. REINFORCEMENT STEEL AREA 0.12 SQ./FT FOR STANDARD SHAFTING AND AREA 0.18 SQ./FT FOR DRAIN MODULES AND BASE. SEE DETAIL ON SHEETS 1 AND 2.
6. MAXIMUM HEIGHT 50 FEET, SEE PROJECT PLANS IF THE HEIGHT EXCEEDS 50 FEET.
7. ALL JOINTS TO BE SEALED USING APPROVED PREFORMED FLEXIBLE JOINT SEALANT. SEALANT SHALL MEET OR EXCEED ASTM C 990.
8. DRYWELL SHALL BE PROVIDED WITH MINIMUM 30-INCH FRAME AND COVER IN ACCORDANCE WITH STANDARD PLAN S-283-0.
9. MANHOLE COMPLIES WITH HS20 TRAFFIC LOADING.
10. THE STRUCTURE WAS NOT DESIGNED TO RECEIVE SURCHARGE LOADS FROM ADJACENT STRUCTURES OR RAILROAD LOADS.
11. CONTACT BUREAU OF CONTRACT ADMINISTRATION MATERIAL CONTROL SECTION AT (213) 485-5080 FOR FABRICATION INSPECTION.
12. A COPY OF PRODUCTION APPROVAL TO BE AVAILABLE AT PRECON PRODUCTS MANUFACTURING PLANT AND JOB SITE AT ALL TIMES.
13. SEE PROJECT PLANS FOR CONNECTOR PIPE SIZE, TYPE AND INVERT ELEVATIONS.
14. SEE PROJECT PLANS FOR CHAMBER ELEVATIONS.
15. DRAIN HOLES AS REQUIRED BY PLANS.

LOCATION: T:\Drawings\Vault\DESIGNS\MANHOLES\LA City\LA City Drywell\LA City Drywell.dwg



240 W. LOS ANGELESE AVE. SIMI VALLEY, CA 93065
 P: (805) 527-0841 F: (805) 584-0769
 WWW.PRE-CONPRODUCTS.COM

THE CONTENTS OF THESE DRAWINGS ARE THE PROPERTY OF PRECON PRODUCTS AND ARE PROPRIETARY AND CONFIDENTIAL. THESE DOCUMENTS SHALL NOT BE DISSEMINATED FOR ANY OTHER USE, WITHOUT THE WRITTEN CONSENT OF PRECON PRODUCTS. IF YOU RECEIVE THESE DRAWINGS IN ERROR, RETURN TO SENDER WITHOUT READING, COPYING OR DISCLOSING THE CONTENTS.

DRAWN BY:
K.STRADER
 DATE:
 1/2/2019

TITLE:
**42" INFILTRATION DRYWELL
 LA CITY DRAINAGE SYSTEM**

SHEETS:
 3 OF 3
 DO NOT SCALE