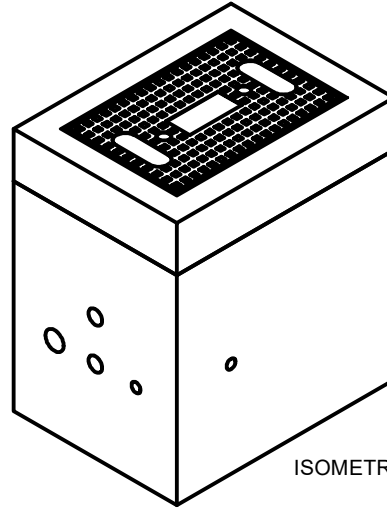
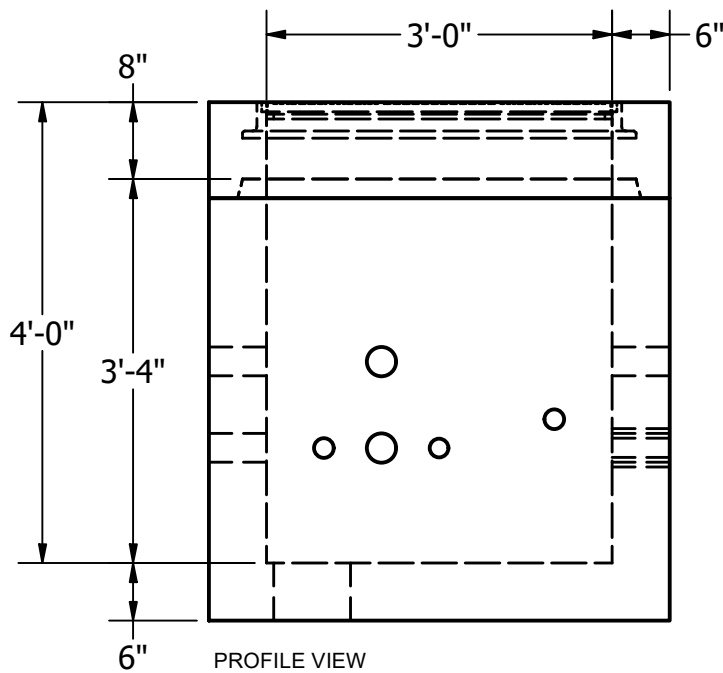


PLAN VIEW

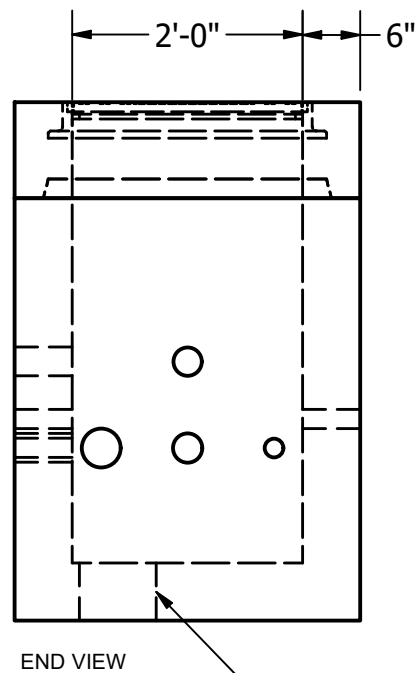
FRAME AND COVERS  
SUPPLIED BY OTHERS  
AND CAST INTO TOP



ISOMETRIC VIEW



PROFILE VIEW



END VIEW

8" x 8" SUMP HOLE

**NOTES: UNLESS OTHERWISE SPECIFIED.**

1. CONCRETE SHALL HAVE A MINIMUM COMPRESSIVE STRENGTH F C= 4000 PSI AT 28 DAYS. MIX DESIGN 1595455 SCC 5000 PSI.
2. VAULT SHALL BE H20 LOADING.
3. THE PORTLAND CEMENT USED IN THE PRECAST SECTION SHALL MEET THE REQUIREMENTS OF TYPE II/V HIGH SULFATE RESISTANT CEMENT IN ACCORDANCE WITH ASTM C-150.
4. SOLID COVER AND FRAME PER SUPPLIED BY OTHERS AND CAST INTO TOP.
5. REBAR SHALL BE ASTM A615 GRADE 60.
6. VAULT MARKED AS REQUIRED, MFG, DATE, PRODUCT NUMBER, AND LOGO.
7. TOP TO BE DRY FITTED BEFORE SHIPPING.

CORE HOLE SIZES AND LOCATION TO BE PROVIDED BY OTHERS.



240 W. LOS ANGELES AVE. SIMI VALLEY, CA 93065  
P: (805) 527-0841 F: (805) 584-0769,  
WWW.PRE-CONPRODUCTS.COM

THE CONTENTS OF THESE DRAWINGS ARE THE PROPERTY OF PRECON PRODUCTS AND ARE PROPRIETARY AND CONFIDENTIAL. THESE DOCUMENTS SHALL NOT BE DISSEMINATED FOR ANY OTHER USE, WITHOUT THE WRITTEN CONSENT OF PRECON PRODUCTS. IF YOU RECEIVE THESE DRAWINGS IN ERROR, RETURN TO SENDER WITHOUT READING, COPYING OR DISCLOSING THE CONTENTS.

DRAWN BY:  
**K.STRADER**  
DATE:  
**3/4/2019**

TITLE:  
**2'x 3'x 4' VAULT**

SHEETS:  
**1 OF 1**

DO NOT SCALE