

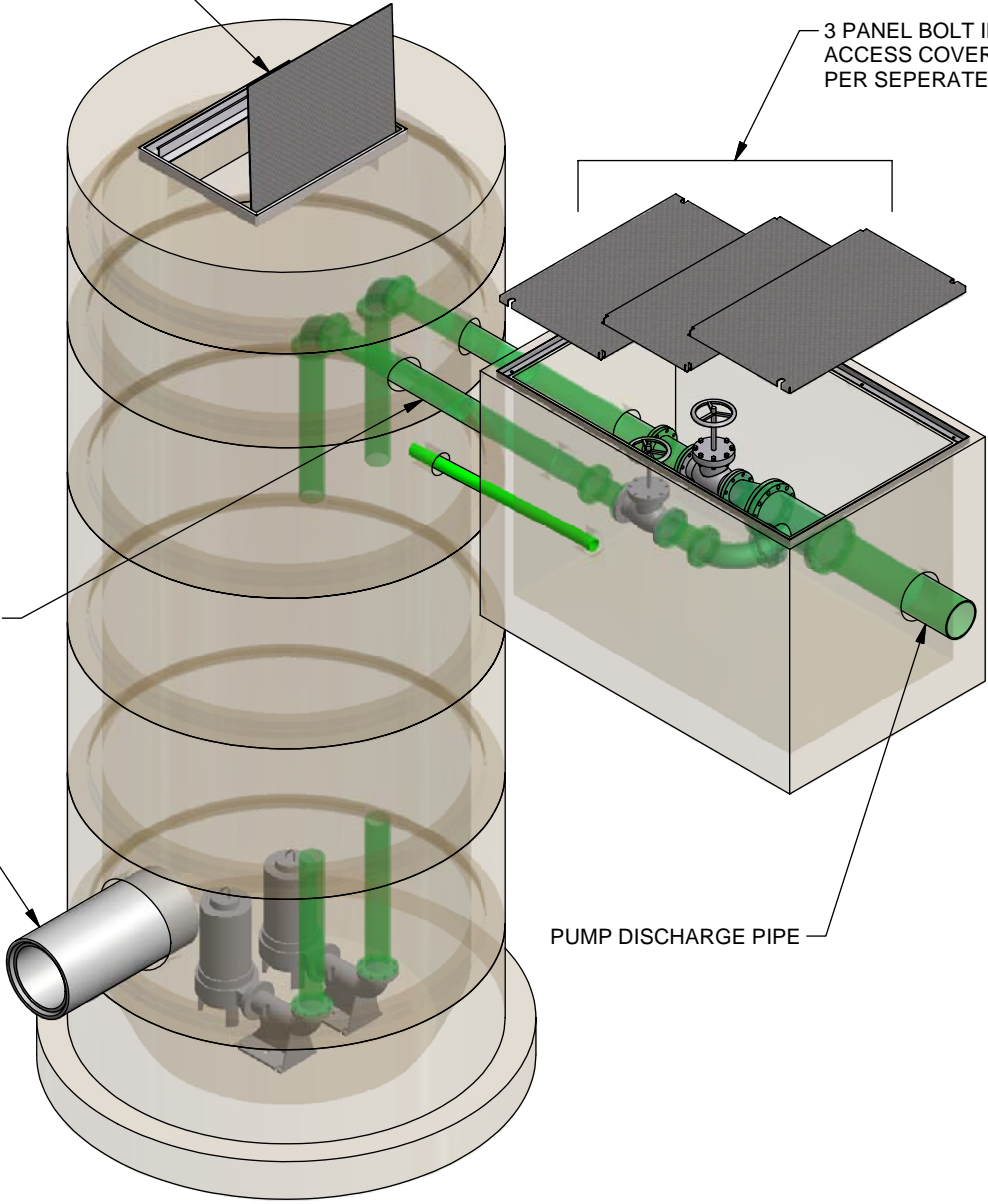
1 LEAF ALUMINUM ACCESS HATCH
PER SEPERATE SUBMITTAL

3 PANEL BOLT IN PLACE
ACCESS COVER
PER SEPERATE SUBMITTAL

PUMP DISCHARGE PIPE

INLET PIPE

PUMP DISCHARGE PIPE



ISOMETRIC VIEW

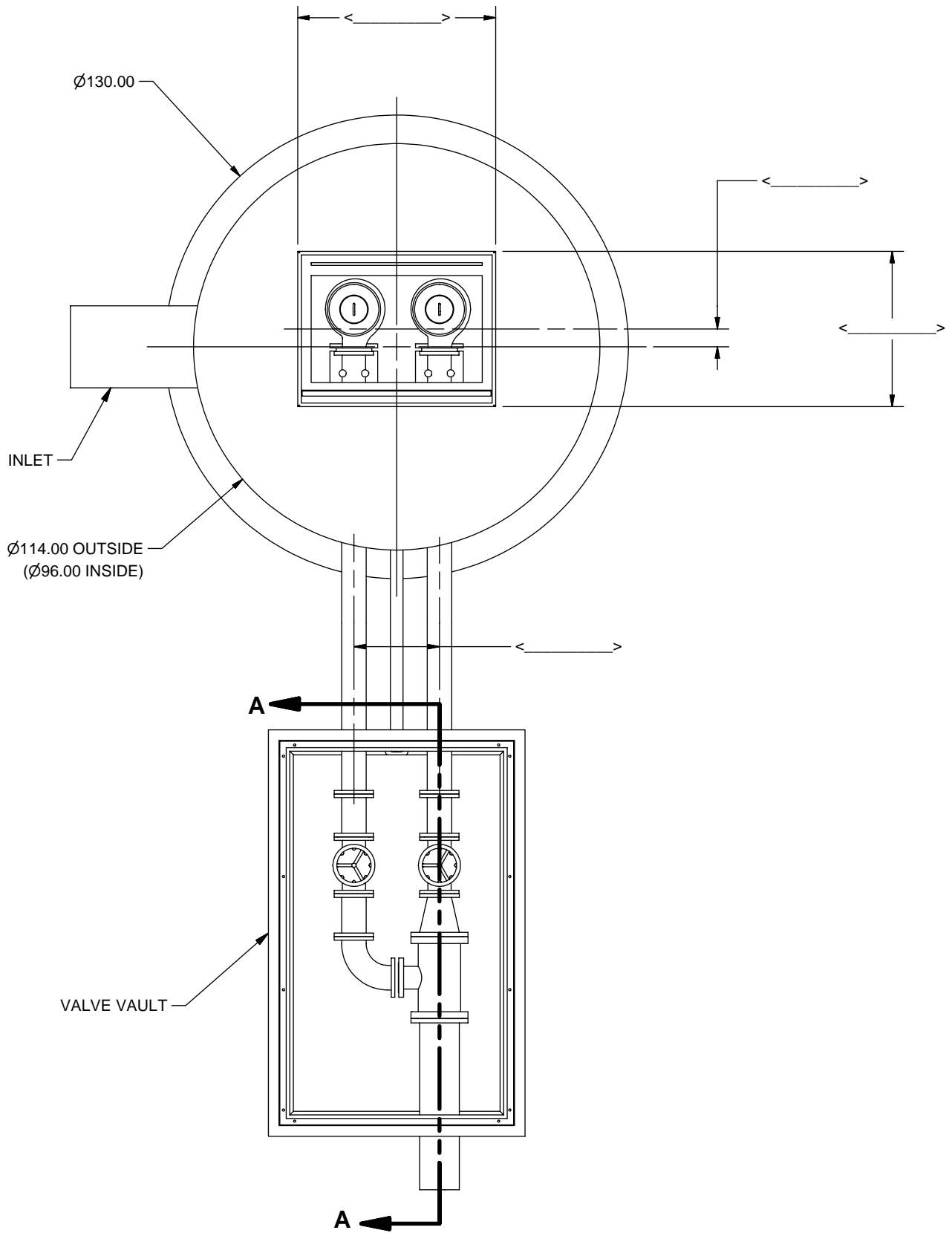
NOTES: UNLESS OTHERWISE SPECIFIED.

1. ALL DIMENSIONS ARE IN DECIMAL INCHES.
2. PRE-CAST CONCRETE MATERIALS AND MANUFACTURING METHODS SHALL CONFORM TO ASTM C-478.
3. CONCRETE SHALL HAVE A MINIMUM COMPRESSIVE STRENGTH F C= 4000 PSI AT 28 DAYS.
4. THE PORTLAND CEMENT USED IN THE PRE-CAST SECTIONS SHALL MEET THE REQUIREMENTS OF TYPE V HIGH SULFATE RESISTANT CEMENT IN ACCORDANCE WITH ASTM C-150.
5. PRE-CAST JOINTS SHALL BE SEALED USING MASTIC. NOTE: RUBBER GASKET AVAILABLE ON 84.00 AND LARGER MANHOLES.
6. OPTIONAL: PIPE TO MANHOLE CONNECTIONS SHALL BE MADE USING X-CEL, A-LOK OR Z-LOK FLEXIBLE CONNECTORS BY A-LOK PRODUCTS. CONNECTORS SHALL MEET THE REQUIREMENTS OF ASTM C-923.
7. CONTRACTOR SHALL SEAL ALL PENETRATIONS MADE AT JOB SITE AND OR NOT SHOWN ON PLANS.
8. ACCESS COVER PER SEPARATE SUBMITTAL.
9. FILLET IS CONSTRUCTED AS A SECONDARY POUR.
10. PUMPS, PIPING AND HARDWARE BY OTHERS.



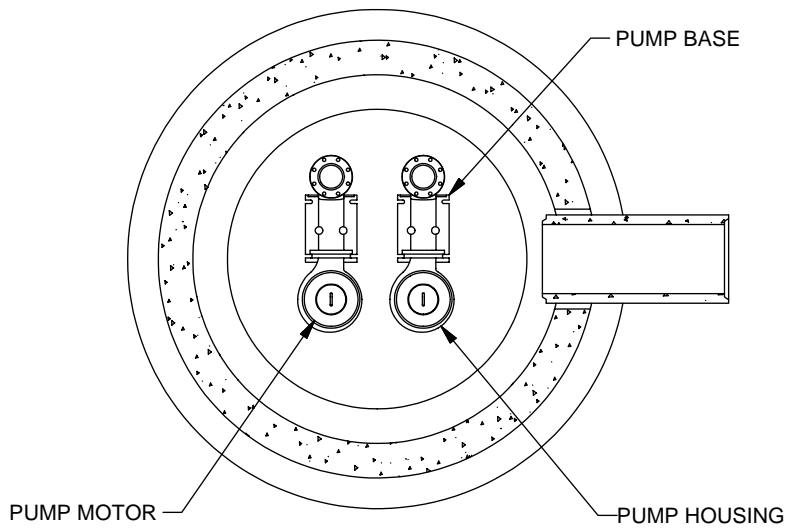
TITLE
PUMP STATION, 96.00 DIAW/VAULT

APPROVED BY	DATE	APPROVED BY	DATE	DRAWN BY	DATE	MODEL NO.	SH 1 OF 5
				F. ANSALDI	12/15/2005	PS96V-STD	

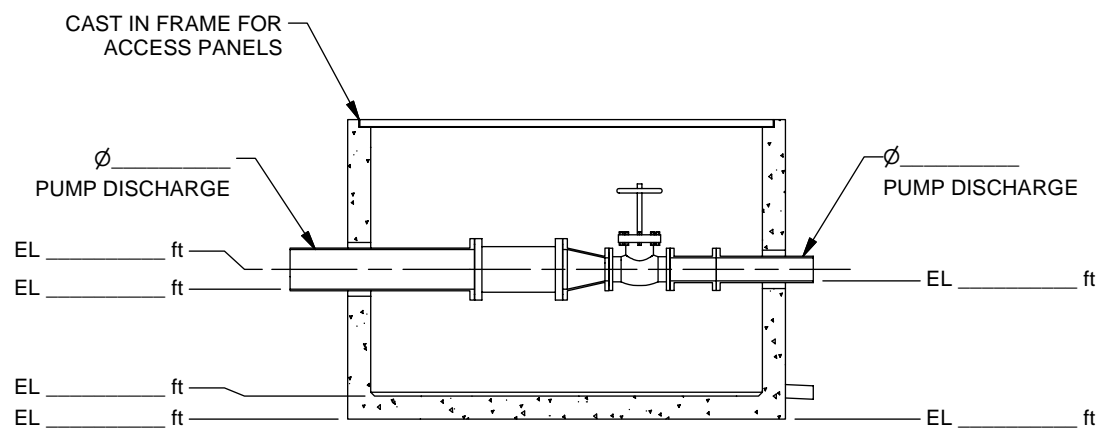


TITLE
 PUMP STATION, 96.00 DIAW/VAULT

APPROVED BY	DATE	APPROVED BY	DATE	DRAWN BY	DATE	MODEL NO.	SH 2 OF 5
				F. ANSALDI	12/15/2005	PS96V-STD	



PUMP STATION PLAN SECTION VIEW

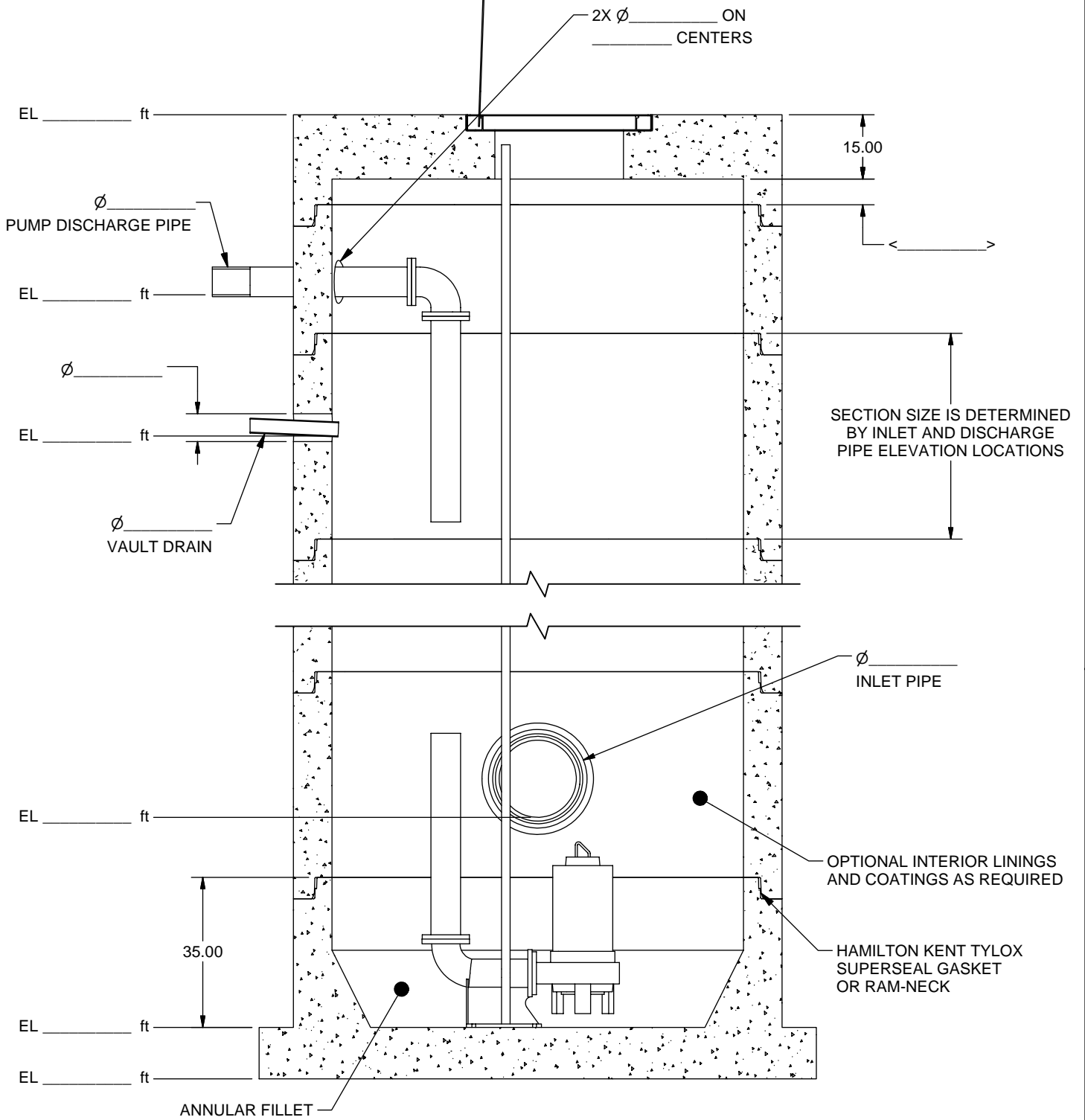


**SECTION A-A
(ELEVATION VIEW)
ROTATED 90° CW**

REGON PRODUCTS
 Phone (805) 527-0841 Fax (805) 584-0769

TITLE
 PUMP STATION, 96.00 DIAW/VAULT

APPROVED BY	DATE	APPROVED BY	DATE	DRAWN BY	DATE	MODEL NO.	SH 3 OF 5
				F. ANSALDI	12/15/2005	PS96V-STD	

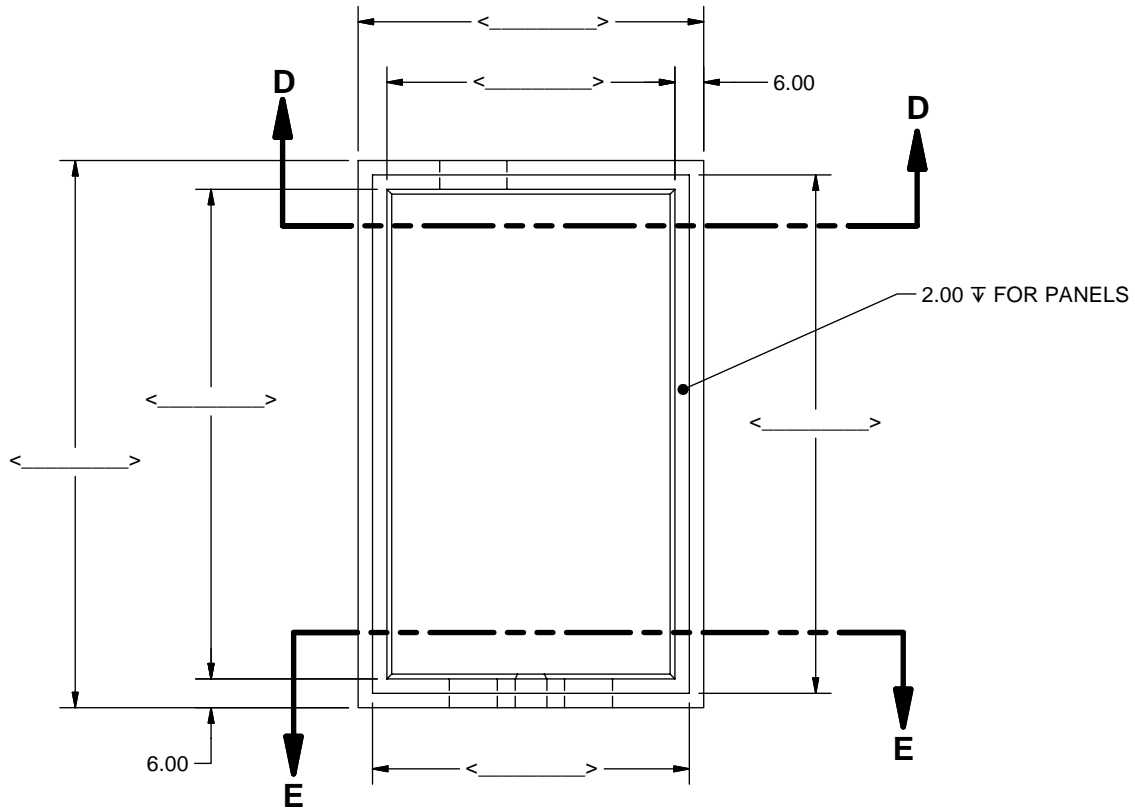


PUMP STATION ELEVATION SECTION VIEW

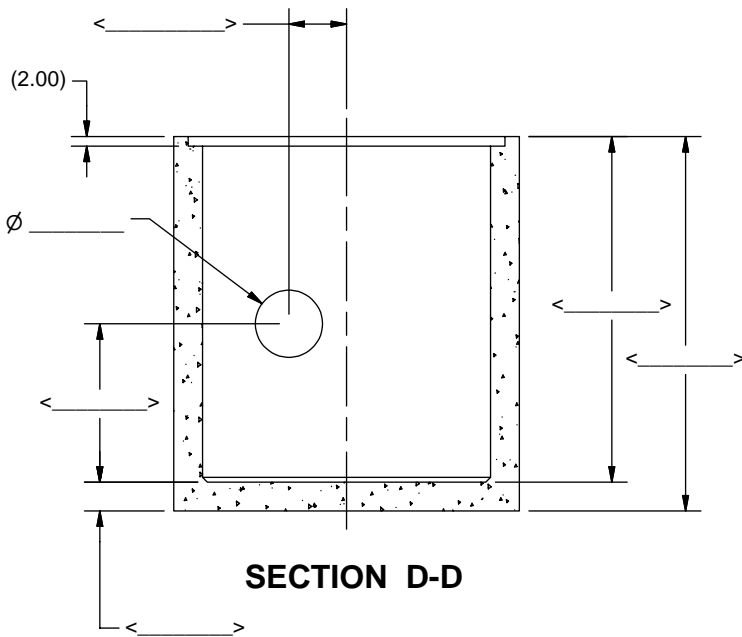


TITLE
PUMP STATION, 96.00 DIAW/VAULT

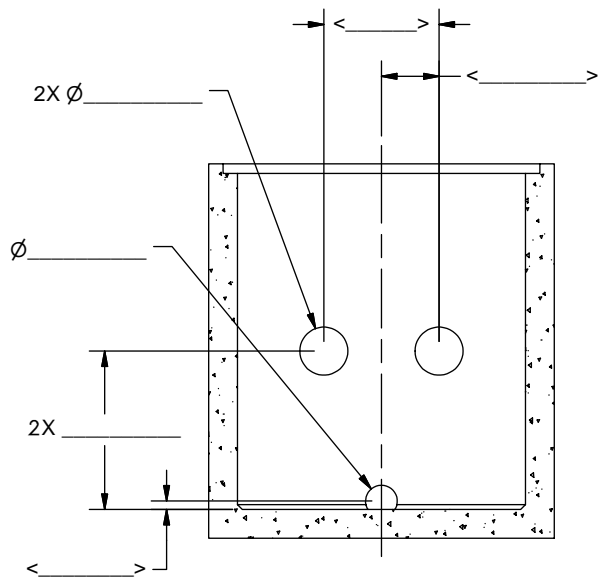
APPROVED BY	DATE	APPROVED BY	DATE	DRAWN BY	DATE	MODEL NO.	SH 4 OF 5
				F. ANSALDI	12/15/2005	PS96V-STD	



VAULT PLAN VIEW



SECTION D-D



**SECTION E-E
ROTATED 180° CCW**

PRODUCTION VIEW (VAULT)



TITLE		PUMP STATION, 96.00 DIAW/VAULT	
DRAWN BY	DATE	MODEL NO.	SH 5 OF 5
F. ANSALDI	12/15/2005	PS96V-STD	

APPROVED BY	DATE	APPROVED BY	DATE
-------------	------	-------------	------