

1 LEAF ALUMINUM ACCESS HATCH
PER SEPERATE SUBMITTAL

3 PANEL BOLT IN PLACE
ACCESS COVER
PER SEPERATE SUBBMITTAL

PUMP DISCHARGE PIPE

INLET PIPE

PUMP DISCHARGE PIPE

ISOMETRIC VIEW

NOTES: UNLESS OTHERWISE SPECIFIED.

1. ALL DIMENSIONS ARE IN DECIMAL INCHES.
2. PRE-CAST CONCRETE MATERIALS AND MANUFACTURING METHODS SHALL CONFORM TO ASTM C-478.
3. CONCRETE SHALL HAVE A MINIMUM COMPRESSIVE STRENGTH F_C= 4000 PSI AT 28 DAYS.
4. THE PORTLAND CEMENT USED IN THE PRE-CAST SECTIONS SHALL MEET THE REQUIREMENTS OF TYPE V HIGH SULFATE RESISTANT CEMENT IN ACCORDANCE WITH ASTM C-150.
5. PRE-CAST JOINTS SHALL BE SEALED USING MASTIC. NOTE: RUBBER GASKET AVAILABLE ON 84.00 AND LARGER MANHOLES.
6. OPTIONAL: PIPE TO MANHOLE CONNECTIONS SHALL BE MADE USING X-CEL, A-LOK OR Z-LOK FLEXIBLE CONNECTORS BY A-LOK PRODUCTS. CONNECTORS SHALL MEET THE REQUIREMENTS OF ASTM C-923.
7. CONTRACTOR SHALL SEAL ALL PENETRATIONS MADE AT JOB SITE AND OR NOT SHOWN ON PLANS.
8. ACCESS COVER PER SEPARATE SUBMITTAL.
9. FILLET IS CONSTRUCTED AS A SECONDARY POUR.
10. PUMPS, PIPING AND HARDWARE BY OTHERS.

REGON PRODUCTS

Phone (805) 527-0841 Fax (805) 584-0769

TITLE

PUMP STATION, 72.00 DIA-W/Vault

APPROVED BY

DATE

APPROVED BY

DATE

DRAWN BY

DATE

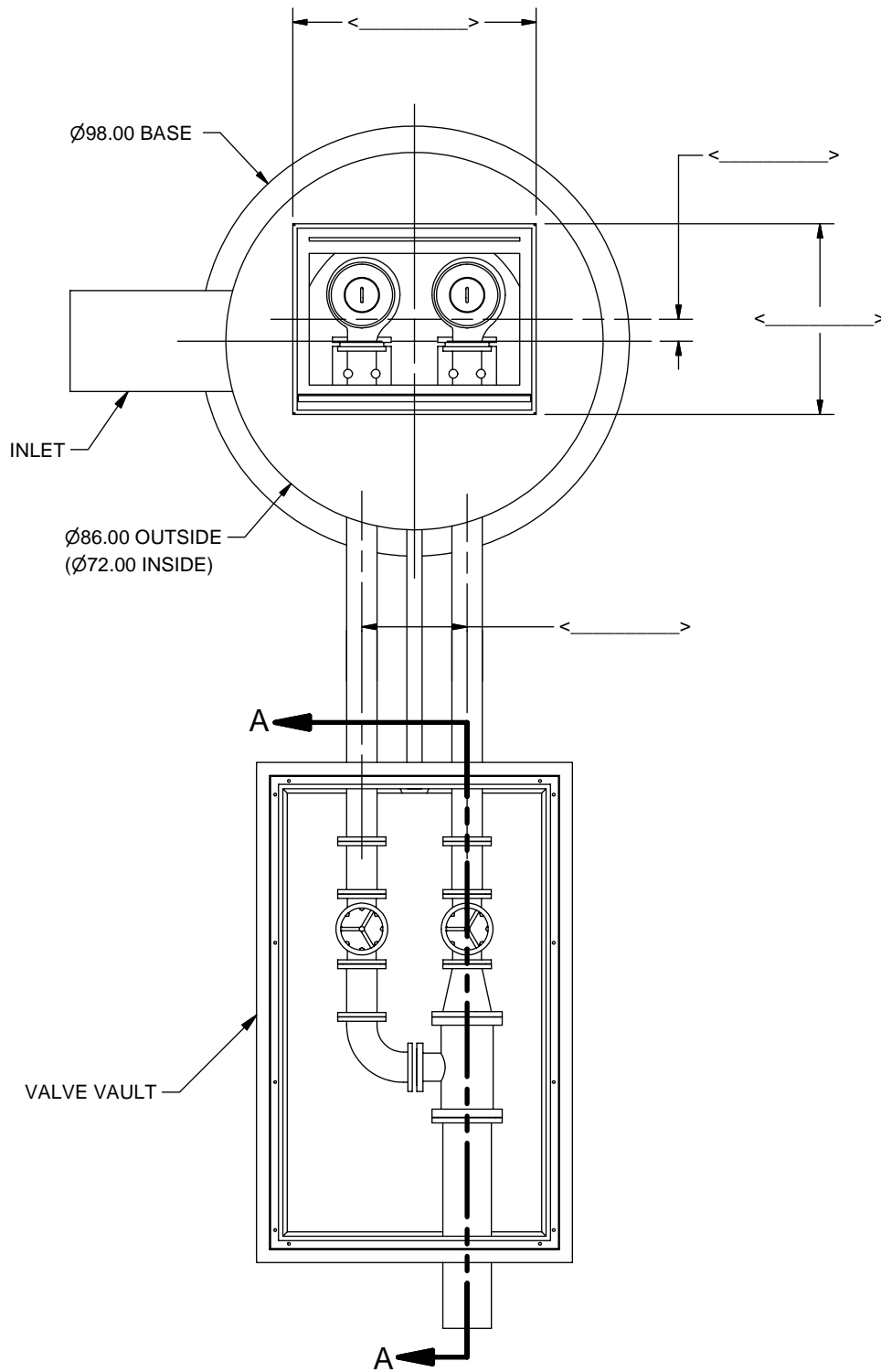
MODEL NO.

SH 1 OF 5

F. ANSALDI

12/14/2005

PS72V-STD



REGON PRODUCTS
 Phone (805) 527-0841 Fax (805) 584-0769

TITLE
 PUMP STATION, 72.00 DIA-W/VAULT

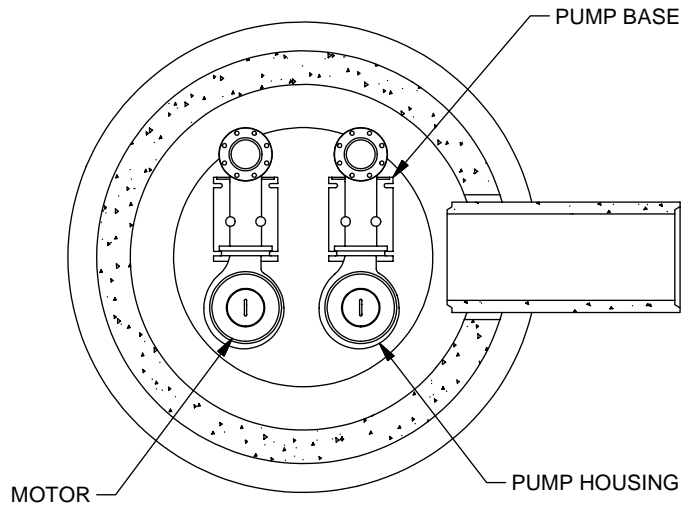
APPROVED BY _____ DATE _____

APPROVED BY _____ DATE _____

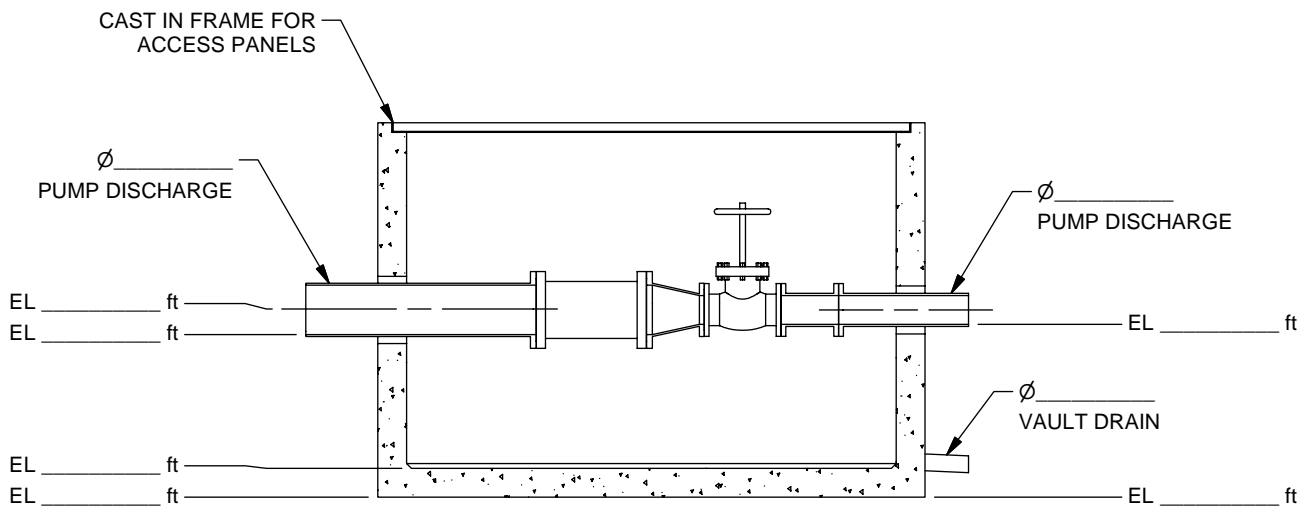
DRAWN BY
 F. ANSALDI

DATE
 12/14/2005

MODEL NO.
 PS72V-STD SH 2 OF 5



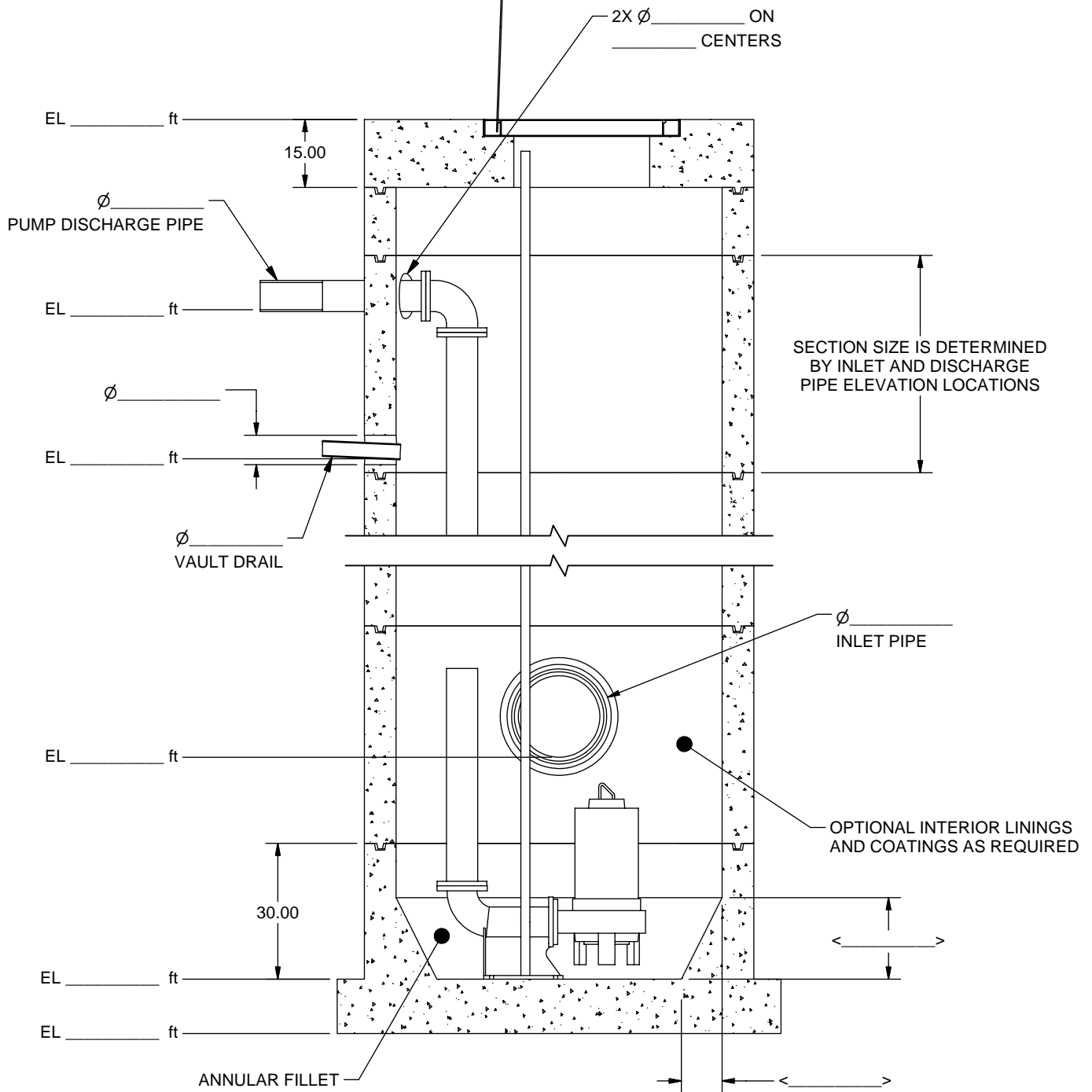
PUMP STATION PLAN SECTION VIEW



SECTION A-A
(ELEVATION VIEW)
ROTATED 90° CW

REGON PRODUCTS
Phone (805) 527-0841 Fax (805) 584-0769

TITLE		PUMP STATION, 72.00 DIA-W/VAULT	
APPROVED BY	DATE	APPROVED BY	DATE
F. ANSALDI	12/14/2005		
DRAWN BY	DATE	MODEL NO.	SH 3 OF 5
F. ANSALDI	12/14/2005	PS72V-STD	

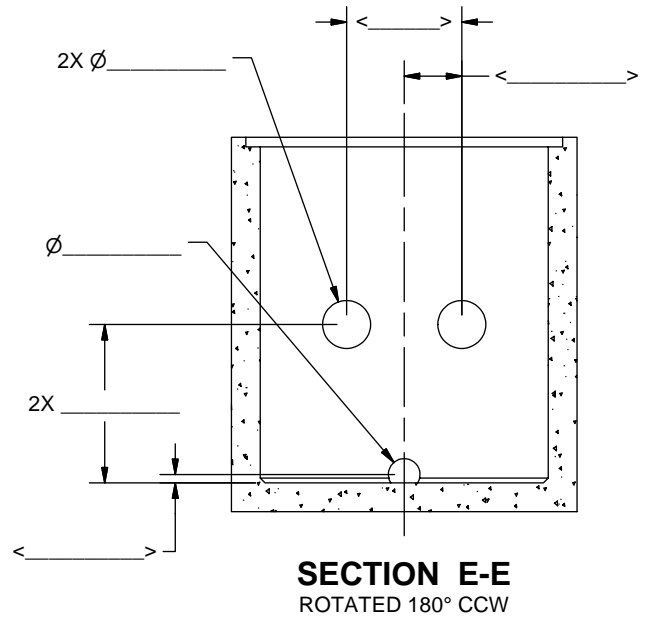
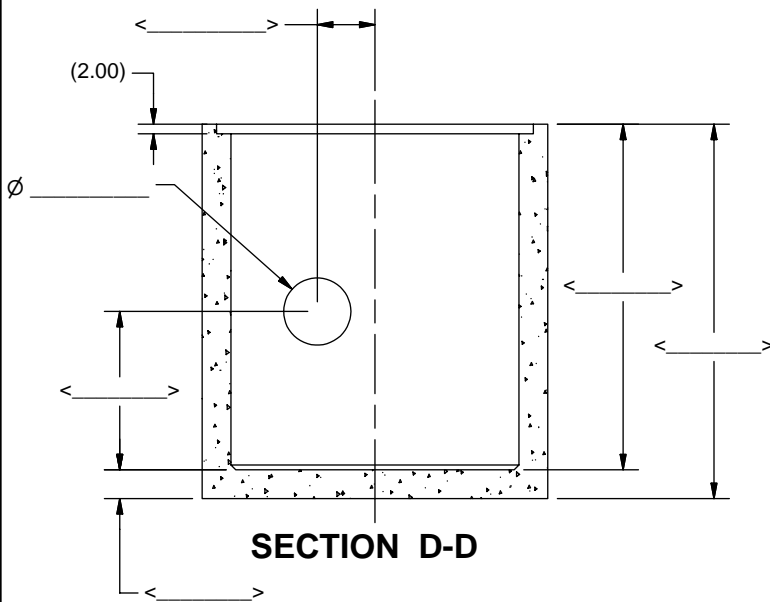
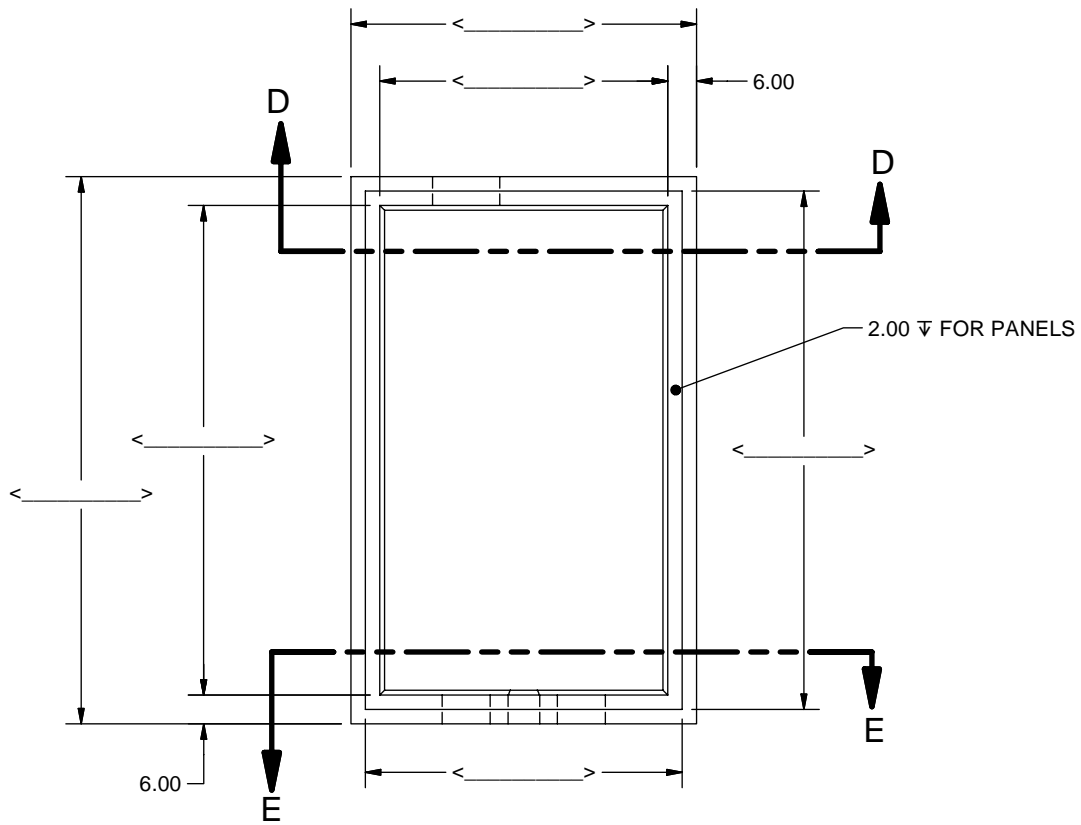


PUMP STATION ELEVATION SECTION VIEW



TITLE
 PUMP STATION, 72.00 DIA-W/VAULT

APPROVED BY	DATE	APPROVED BY	DATE	DRAWN BY	DATE	MODEL NO.	SH 4 OF 5
				F. ANSALDI	12/14/2005	PS72V-STD	



PRODUCTION VIEW (VAULT)



TITLE		PUMP STATION, 72.00 DIA-W/VAULT	
DRAWN BY	DATE	MODEL NO.	SH 5 OF 5
F. ANSALDI	12/14/2005	PS72V-STD	

APPROVED BY	DATE	APPROVED BY	DATE